



Thank You



**Rian Health Care**  
ISO 9001:2015 CERTIFIED COMPANY  
[www.rianhealthcare.com](http://www.rianhealthcare.com)

QUALITY  
HEALTH  
ETHICS



**Rian Health Care**  
Spreading rays of ethics, health and quality with every endeavour





**Strong enough to fight**  
**resistance in moderate to severe infections**

RI  
CLV

# RI-CLAVONIP **625**

Amoxicillin 500 mg. + Clavulanate 125 mg.

Tablets

## AMOXYCILLIN

Inhibiting the bacterial cell wall synthesis  
It's a bactericidal agent having both gram +ve  
and gram -ve coverage

## CLAVULANIC ACID

Clavulanic Acid inhibit a wide range of  
beta-lactamas strains and protects amoxicillin  
from degradation

## INDICATION :

- ▶ Respiratory tract infections
- ▶ ENT Infections
- ▶ Urinary tract infections
- ▶ Skin & soft tissue infections
- ▶ Gynaecological infections

**RI-CLAVONIP **625****

Amoxicillin 500 mg. + Clavulanate 125 mg.

Tablets

*The versatile anti-bacterial*



TO GET THE  
**PERFECT GRIP**  
OVER THE INFECTION



RI  
CEF

# RI-Ceft-O

Cefixime 200 mg. + Ofloxacin 200 mg. + Lactic Acid Bacillus Tablets

## Cefixime

- High efficacy & low incidence of side effects make it the drug of choice in RTI infections
- Effective & well tolerated in the treatment of bacterial sinusitis in adults
- Effective in the treatment of pharyngeal gonorrhoea

Int. J Std AIDS.2007 aPR;18(4):253-4

## Ofloxacin

- Broad spectrum antibiotic
- Active against Gram positive, Gram negative and anaerobes
- Possesses good penetration in most tissues

### In

- Respiratory infections
- Urinary Tract Infections
- Typhoid Fever
- G.I. Tract infections
- Intra Abdominal Infections
- Surgical Prophylaxis

Also available  
**RI-Ceft 200**  
Cefixime Dispersible 200 mg Tablets

## RI-Ceft-O

Cefixime 200 mg. + Ofloxacin 200 mg. Tablets

### ***Power over infections***

**The Target Shooter Long Acting Macrolide**

# Zithrian-500

Azithromycin 500 mg Tablet

- Azithromycin has greater acid stability than Erythromycin
- It acts by interfering with microbial protein synthesis by binding to the 50s ribosomal subunit
- It has more activity against gram-ve and atypical micro-organisms than other macrolides

## Zithrian-500

**The match winner amongst all macrolides**



### INDICATION :

- Upper Respiratory Tract Infection
- Lower Respiratory Tract Infection
- Skin & Soft Tissue Infections
- Urogenital Infection
- Tonsillitis
- Pharyngitis
- Sinusitis



For a speedy  
recovery from **PAIN**

**Romadin**<sup>®</sup>  
Aceclofenac 100 mg. + Paracetamol 325 mg. TABLETS

ROM  
TAB

### ACECLOFENAC

- Effectively reduces pain and severity of inflammation
- Better bio availability profile in GI Tract
- Efficient and safer therapy of Rheumatoid Arthritis
- Efficacious in dental pain

### PARACETAMOL

- Antipyretic and analgesic agent
- Rheumatoid Arthritis
- Ankylosing Spondylitis
- Osteoarthritis
- Dental Pain

**Romadin**<sup>®</sup>  
Aceclofenac 100 mg. + Paracetamol 325 mg. TABLETS

Offers better **efficacy** and **predictability**







Rising temperatures gives  
rise to multiple problems

# Axadyl-650

AXA  
650

Paracetamol 650 mg Dispersible Tablets

- Acts by inhibiting the enzyme cyclo-oxygenase (COX) and has a high affinity for COX-2  
FASEB J. 2008 FEB;22(2) : 283-90
- Has an onset of analgesia time of around 11 minutes  
Br. J. Anaesth 2005 May;94(5)-642-8
- Is more effective than intramuscular pethidine to relieve pain  
Niger Med J. 2014 Jan;55(1)54-7
- Is effective for fever control in acute brain injury patients  
Acta Neurochir (Wien);2014 May 17

## INDICATIONS

- Pyrexia
- Post surgical pain
- Moderate pain following injuries

**Axadyl-650**  
An ally in difficult times



When soaked tissues & spoiled moods...

Rob action out of work



# Axadyl-Cold

Nimesulide 100 mg + Phenylephrine 10 mg + Caffeine 30 mg + Cetirizine 5 mg Tablet

## ■ Nimesulide

Is effective in fever, musculoskeletal system pain and in ENT inflammation

## ■ Phenylephrine

Nasal Decongestant

## ■ Caffeine

Indicated in CNS stimulation, Headache & Migraine

## ■ Cetirizine

Anti-allergic, prevents sneezing, watery eyes and nose, other symptoms of allergic and hay fever

In

- Allergic Rhinitis
- Common Cold
- Sinusitis
- Chronic Bronchitis
- Dermographic
- Ocular Allergy

When Night Time GERD becomes too Disturbing

# Pantorin DSR

Pantoprazole 40 mg. + Domperidone 30 mg. SR Capsules

## PANTOPRAZOLE

- The Chemical activation half life Pantoprazole (4.7 hrs.) was longer than that of Omeprazole (1,.4 hrs) Lansoprazole (1.5 hrs) & Rebeprazole (0.12 hrs)
- Pantoprazole is chemically more stable than Omeprazole, Lansoprazole & especially Rabeprazole under neutral to mild acidic conditions but is more rapidly activated under strongly acidic conditions.
- Pantoprazole is significantly more effective than Omeprazole in inhibiting meal stimulated acid secretion.

## DOMPERIDONE

- Domperidone in sustained release form allows once-a-day administration
- Improves patient compliance
- No compromise on the efficacy

**In**

- Promotes Gastric Emptying
- Improves LES tone
- Reduce Nausea & Vomiting

**PUTS GERD...  
DISCOMFORT REST**

PAN  
DSR



# DELCOB12

Methylcobalamin Sublingual 1500 mcg.

TABLETS

Multiple Sclerosis and other  
"DEGENERATIVE SPINAL CORD" Diseases  
Brain Fog or the inability to think clearly

DEL

## Rx in

- Neuropathy
- Chronic fatigue syndrome
- Migraine
- Autism
- Fibromyalgia
- Arthritis
- Sleep disorder
- Depression
- Anxiety
- Pernicious anemia





The Symptoms of Allergy can affect patient, No matter what time of year

# Ri-Monti-L

Levocetirizine Dihydrochloride 5 mg. + Montelukast Sodium 10 mg. Tablets

**The Powerful Manger in Conventional Allergies**

## **LEVOCETIRIZINE** **GOLD STANDARD ANTI-LEUKOTRIENE**

- ▶ Inhibits Leukotrienes and H1 Receptors
- ▶ Reduces Broncho constriction and airway obstruction

## **MONTELUKAST** **TIME TESTED ANTI-ALLERGIC**

- ▶ Selective, long acting peripheral H1 receptor antagonist
- ▶ Relieves from distressing symptoms

**In**

- ▶ Seasonal Allergic Rhinitis
- ▶ Perennial Allergic Rhinitis
- ▶ Rhinitis Associated with Asthma





*Free your patient from fungal infections*

# *Itria-200*

Itraconazole 200 mg Capsules

- Potent inhibitor of most human fungal pathogens
- Extremely effective in wide range of superficial & systemic fungal infections
- Achieves high clinical & mycological cure rates
- Effectively treats resistant recurrent fungal infections

Vaginal Candidiasis

Systemic fungal infections

Onychomycosis

Mucocutaneous Candidiasis

Oral Thrush

Dermatophytosis

ITR



*Ensure Freedom from Fungal Infections*





Successfully Eradicate  
Fungal Infection for  
**Clean Skin**

# LULIRIN

**Luliconazole 1% w/w Cream**

- Kill the fungal pathogens by interfering the formation cell membrane and weakening it
- Offer a broad spectrum antifungal agent with high potency
- Ensure shorter duration of treatment than other topical antifungal agents
- Most potent antifungal agent against dermatophytes trichophyton rubrum, microporum gypseum and epidermophyton floccosum

- Tinea Pedis
- Tinea Corporis
- Tinea Cruris
- Tinea Versicolor

**LULIRIN**

*Time tested & best topical solution  
for FUNGAL INFECTIONS*



# Axadyl

Cough Syrup

*The most trusted cough expert*

Free your lungs  
from all type of COUGH



## Dextromethrophan Hydrobromide

I.P. 15mg./5ml

**Mentholated syrup base**  
Soothes the throat

**DRY COUGH**  
ACTIVE RELIEF

**3** Way  
Actions

Clear

Suppress

Protects



## Ambroxol Hydrobromide

I.P. 15mg./5ml

**Mentholated syrup base**  
Soothes the throat

**Productive COUGH**  
ACTIVE RELIEF



AXA  
SYP

*Clinically proven targeted relief for your cough*



*Jazzy due to cold & fever*

# Axadyl-P<sup>®</sup> Suspension

Paracetamol 250mg + Phenylephrine Hcl 5 mg. +  
Chlorpheniramine Maleate 1 mg. + Sodium Citrate 60 mg. +  
Menthol 1 mg.

## Paracetamol

An Analgesic & Antipyretic

## Phenylephrine

A potent & safe nasal decongestant

## Chlorpheniramine

An Ideal anti-allergic

## Sodium Citrate

A well recognised expectorant,  
facilitates raising of sputum

### INDICATIONS

- Fever along with body pain
- Nasal allergy with congestion
- Allergic rhinitis
- Parenial allergic rhinitis
- Seasonal allergic rhinitis
- Common Cold



**Axadyl-P**  
Suspension *Drill the cold out*

AXA  
P





**For all types of Cough...**

# DEETUS

## Herbal Cough Syrup

- A Potent mucolytic & effective demulent
- Offers a natural relief in cough management
- A gentle bronchodilator to ensure normal breathing
- An effective anti histaminic without side effects of sedation
- Soothes irritable cough to smoking and air pollution
- Clears mucus deposits
- Relieves from deep bronchial problems
- Effective in relieving discomfort in children as well adults

Ayurvedic  
Cough Syrup  
Fortified with  
**Tulsi, Ardusi &  
Kanthakari**



### **In**

- Dry Cough
- Productive Cough
- Smoker's Cough
- Acute & Chronic Bronchitis



# HYPERACIDITY

Associated with  
Indigestion & Bloating



# RI CID-D<sup>Susp.</sup>

Magaldrate 480 mg + Simethicon 20 mg + Domperidone 10 mg/ 10 ml

Start Acting within **10 Seconds...**

## MAGALDRATE

- Provides sustained antacid effect
- Maintains the pH of 3.5 to 4

## DOMPERIDONE

- Speeds up gastric emptying
- Prevent reflux
- Reduces nausea & vomiting

## SEMITHICON

- Relieves flatulence & discomfort due to excess GI Gas
- Relieves associated indigestion, flatulence & reflux

**Sugar Free**



RIC  
D

***Faster Action & Sure Result***





In Growing Needs,  
Deficiency States & Increased  
Demands of Calcium

# RI-Calzium

Calcium Carbonate + Vitamin D3 + Magnesium + Zinc Gluconate

200 ml. Suspension

## Calcium Carbonate

- ▶ Meets the increased demand of calcium during growth spurt

## Vitamin D3

- ▶ Accelerates calcium absorption
- ▶ Improves bone matrix
- ▶ Strengthens cartilages & improves muscle mass

## Magnesium Hcl

- ▶ Necessary for complete calcium absorption
- ▶ Important in development of foetus

## Zinc Gluconate

- ▶ Growth promoter & tissue developer
- ▶ Helpful in bone forming & mineralization
- ▶ Maximum bone density promoter

Growth & Retardation

Important Milestone

Convalescence

Fractures

Dislocations

**RI-Calzium**

*The ideal calcium...in different needs*



**Restores Liver Disorder**

# **Livgrace**

**SYRUP**

- Improves the structural and functional integrity of liver cells
- Enhances detoxification activity of liver cells
- Protects liver from hepatitis B & C
- Hepato stimulant, hepato protective & hepato rejuvenator

LIV

## **INDICATIONS**

- Hepatic ascites • Alcoholic liver disease • Primary biliary cirrhosis • Post necrotic cirrhosis
- Hepatitis acute & chronic • Fatty liver & liver cirrhosis • Enlarged spleen conditions

**Live with Healthy Liver** **Livgrace**  
SYRUP



**Achieves more potent Iron Supplementation  
In Pregnant Women & Foetus**

# ***Ferian-XT***

Ferrous Ascorbate eq. to Ele. Iron 30 mg.+  
Folic Acid 1.5 mg.+Zinc 22.5 mg.

Suspension

- **Superior Haematinic**
- **Combination to boost up Haemoglobin level**
- **Ferrous ascorbate is the Gold Standard in Iron therapy**
- **Ferrous form is absorbed thrice as much as ferric form of iron**

### ***Indication in***

- Iron Deficiency Anaemia
- Rapid Growth & Development
- Post-Surgical Conditions
- Pregnancy & Lactation
- Dietary Insufficiency
- Chronic or Acute Blood Loss during menstruation & surgery



FXT

# Uterine Tonic that regulates imbalances



# Gynocare

Herbal Uterine Tonic



**In**

- Excessive Bleeding
- Dysmenorrhoea
- Menstrual Irregularities
- Leucorrhoea

- Safe non-hormonal uterine tonic
- Corrects and regulates various Uterine functions
- Regulates ovarian and endometrial functions
- Stimulates the immune system and helps in increasing the level of Hb in the blood
- Controls excessive discharge because of astringent and menstrual regulatory activity

GYN



**Excellent Feminine Health Care Tonic**



Give her Balanced nutrition during pregnancy and lactation

# Riport Mom<sup>®</sup>

... for healthy motherhood



*New Flavoured*  
**Chocolate Elaichi**



## BRAIN DEVELOPMENT

70% of the baby's brain growth occurs during pregnancy. MOTHER'S PORT contains DHA

- Crucial for brain and eye development
- Critical role in development of memory center

### FOLICACID

- Prevents neural tube defects during pregnancy and supports formation of neuronal lipids after baby's birth



## GROWTH

The growing foetus places a high demand on mothers' stores of energy, Protein and micronutrients

- MOTHER'S PORT contains
- Easily digestible PROTEIN blend that supports foetal growth

### FATS & CARBOHYDRATES

- Provide extra energy

### CALCIUM & VITAMIN D

- Critical for bone development



## IMMUNITY

In pregnancy, optimal intake of Zinc and antioxidant nutrients is strongly recommended due to their role in immunity.

MOTHER'S PORT contains

- VITAMIN C, E, ZINC & COPPER that support immune system



## HEALTHY DIGESTION

Constipation is a common complaint among pregnant women.

MOTHER'S PORT is enriched with natural dry fruits which are

- Rich source of fiber
- Helps in faecal bulking and softening
- Increases or regularizes frequency of stool

**Low fat and Zero Trans-fat**

- Supports appropriate weight gain

**WE NEED A BALANCE OF ESSENTIAL NUTRIENTS TO MAINTAIN OPTIMAL HEALTH.  
MODERN DIETS RARELY PROVIDE COMPLETE NUTRITION.**

**Supplementation is most efficient means of supporting the diet**

*Filling the Nutritional Gap*

with

**Riport<sup>®</sup>  
PLUS**  
PROTEIN POWDER



**Riport Plus  
satisfies needs of  
everyone**



**Good quality protein  
with excellent taste**

RI  
PLUS



Let's combat **micronutrient malnutrition**

# Riport

Juicy Syrup

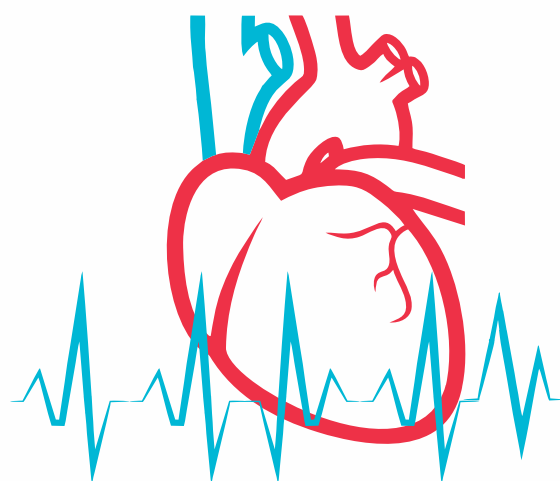
*...because health matter*



RI  
SYP

# ENEMIES OF THE HEART

- High BP • High Cholesterol
- Atherosclerosis • Muscle weakness



# Riport<sup>®</sup> Pulse

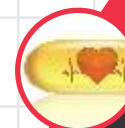
Tablets

with **5** Super Cardio Protectors

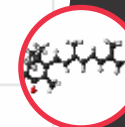
Hawthorne Berry Extract  
50 mg.



Coenzyme Q10  
30 mg.



Astaxanthin  
6 mg.



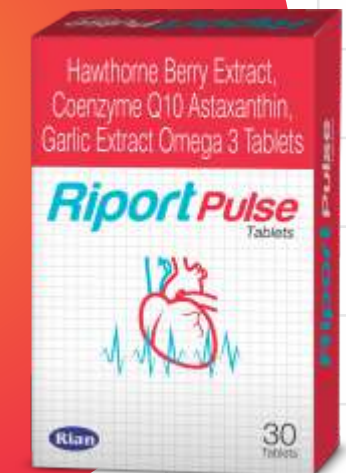
Garlic Extract  
50 mg.



Omega 3  
100 mg.



**POWER  
OF  
5**



**GUARD YOUR HEART**

with **5** Super Cardio Protectors





Feel *fabulous* with  
wonder immunonutrients

# NUTRIAN

TABLET

*Complete*



## Offers a wide range of potential health benefits:

- Facilitates Tissue healing & Protects vital organs
- Strengthens immune System
- Controls oxidative stress caused by free radicals
- Helps to overcome physical & mental stress
- Helps to overcome Nutritional Deficiency
- Healthy Option for Complete Diet

# Crac-Heal

Cissus Quadrangularis 1000 mg. + Moringa Oleifera 100 mg. Tablets

## Fracture Healing Expert...

### Accelerates fracture healing

- Increases the proliferation rate of bone marrow mesenchymal stem cells
- Helps in the differentiation of marrow mesenchymal stem cells into osteoblasts (osteoblastogenesis) and extracellular matrix calcification
- Enhances collagen synthesis in the fracture-healing process
- Increase bone mineral density
- Increases bone mineral density & increases the uptake of minerals calcium, phosphorus, sulfur & strontium by osteoblasts
- Helps in achieving normal tensile strength in minimal period with no side effects

### Relieves pain and inflammation

- Supportive analgesic & anti-inflammatory properties minimises the doses & use of NSAIDS

#### In

- Bone Fracture
- Weak Bones
- Delayed union of fractures
- Osteomyelitis
- Stress fractures
- Post menopausal Osteoporosis
- Senile Osteoporosis
- Patients with low BMD



**Crac-Heal**  
Cissus Quadrangularis 1000 mg. + Moringa Oleifera 100 mg. Tablets

**For Fast & Safe recovery in Bone Frature**



Where the pain can be **chronic and difficult to treat...**

**Joint Pain Relief**

# Romadin<sup>®</sup>

GEL & OIL

Diclofenac Diethylamine, Linseed Oil, Methyl Salicylate & Menthol Gel

- Extends double control on inflammatory process by diclofenac and linseed oil
- Improves local blood circulation for better absorption with Methyl salicylate
- Reduces burning sensation and pain with menthol
- Cooling and soothing action

## Indicated in :

- Osteoarthritis
- Diabetic neuropathy
- Post-herpetic neuralgia
- Sprains/joint pains/sports injury
- Muscular spasm/cramps
- Spondylitis
- Frozen shoulder



***In the Management of Various Inflammatory  
Conditions associated with Spasm***

# Romadin<sup>®</sup>-AQ

Diclofenac Sodium 75 mg/ml (Aqueous Base)

- Romadin AQ has analgesic anti-inflammatory & antipyretic properties
- Is more effective than tramadol 50 mg IV in the prevention of postoperative pain<sup>1</sup>
- Has opioid sparing effects and can be safely used in surgery without significant adverse effects<sup>2</sup>
- Has a rapid onset of action which suggest additional clinical benefit which may improve the safety and efficacy of post operative analgesia

## ***In***

- Biliary Colic
- Renal Colic
- Post-Operative Pain
- Osteoarthritis
- Rheumatoid Arthritis



1. J Maxillofac Oral Surg. 2011 Dec;10(4):306-9. doi: 10.1007/s12663-011-0250-9. Epub 2011 Jun 21.  
2. Indian J Anaesth. 2015 Nov; 59(11); 748-752

**The Correct Choice Against Inflammation Associated with Spasm**





***Powerful Throw  
against infections...***

# RINTAZO-P

Piperacillin 4mg + Tazobactam 0.5mg. Injection

- Used to treat a wide variety of bacterial infections.
- Piperacillin is a penicillin type antibiotic that works by stopping the growth of bacteria.
- Tazobactam is an enzyme inhibitor (beta-lactamase inhibitor) that helps the piperacillin work better.
- Possesses broad spectrum of antibacterial activity against most gram(+)<sup>ve</sup> & gram(-)<sup>ve</sup> bacteria.
- Superior to ceftazidime plus tobramycin synergy in the treatment of serious nosocomial LRTIs

(J. antimicrobial chemotherapy 1999;43:389-97)



**In**

Nosocomial ICU infections

Skin & soft tissue infections

Respiratory tract infections

UTI infections

RIN  
P



**In Life Threatening Emergencies...  
Trust the Most Dependable  
Life Saving Therapy**



#### INDICATION

- Bacterial Meningitis
- SSTI
- Septicaemia of unknown etiology
- Deep Gynecological & Obstetrics infection

# RIPENEM

Meropenem 1gm Injection IP

**The only USFDA & IDSA approved carbapenem  
for the use in meningitis**

American Family Physician; May 2005 Indian Pediatrics 2005;42:443-50

- Broad spectrum antibiotic cover gram (+ve) & anaerobic pathogens.
- Excellent safety profile..thus suitable for use in elderly & / or renally impaired patients.

International Journal of Microbial agent, May 1998, pg 107-117

**Compared with cephalosporin based combination  
treatment**

- Meropenem monotherapy...more effective..in the treatment of nosocomial LRTIs and can be used as monotherapy.

International Journal of Microbial agent, May 1997, pg 73-92



## RIPENEM

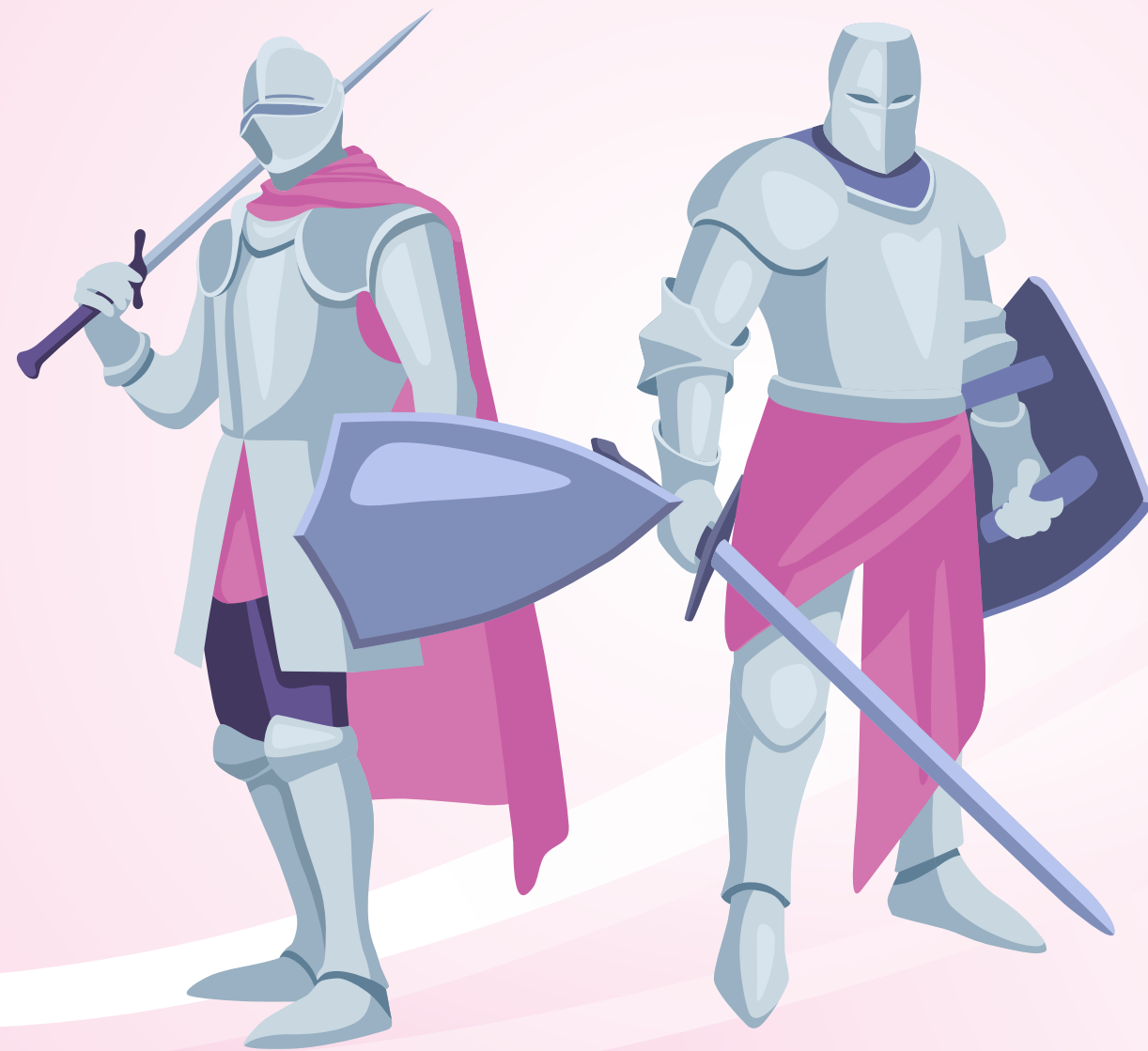
**The most important life saving therapy in intensive care**



## Power of Ceftriaxone Potentiated with Sulbactam

# RIAXONE-S

Ceftriaxone 1000mg + Sulbactam 500mg Injection



ALSO AVAILABLE

**RIAXONE**  
Ceftriaxone 1000mg Injection

### CEFTRIAZONE

- Active against aerobic gram +ve & gram -ve micro-organisma and many anaerobic macro-organism
- Achieves excellent tissue and fluid penetration
- Maintains longer half life among all cephalosporins allowing for once daily dosing

### SULBACTAM

- Inactivates enzymes that destroy penicillins and cephalosporins by lactamase resistant structure
- Potentiates activity of lactarnase sensitive ceftriaxone and increases its spectrum
- Exhibits bactericidal activity against Staphylococci Haemophilus influenzae, Moraxella catarrhalis & Neisseria spp

In

- Gynaecological Infections
- Skin and skin structure infections
- Urinary tract infections
- Bone and joint infections
- Intra abdominal infections
- Surgical infections



## A Safeguard against... Infections

**R<sub>x</sub> In**

- Respiratory Tract Infections
- Urinary Tract Infections
- Bone & Joint Infections
- Bacterial Septicaemia
- Bacterial Meningitis
- SSTIs

# RICEFT-SB

Cefoperazone 1000mg + Sulbactam 500mg Injection

## CEFOPERAZONE

- Excellent susceptibility against most of the Gm+ve & Gm-ve aerobic & anaerobic pathogens (including beta-lactamase producing resistant strains) with over all bacteriological eradication at least 85%
- Lowers the percentage of resistant from 58% to 0.5%  
Effective & safe alternative to Clindamycin & Gentamicin treatment of Intra abdominal infection

## SUBLACTAM

- Enhances the activity of cephalosporins against many resistant strains and bacteria
- Among all beta-lactam inhibitor combinations tested, cefoperazone/sulbactam revealed the highest activity against beta-lactamses producing organisms

Critical Care Medicine, 1985;13:818-829

# RICEFT-SB

*A tough life saver*